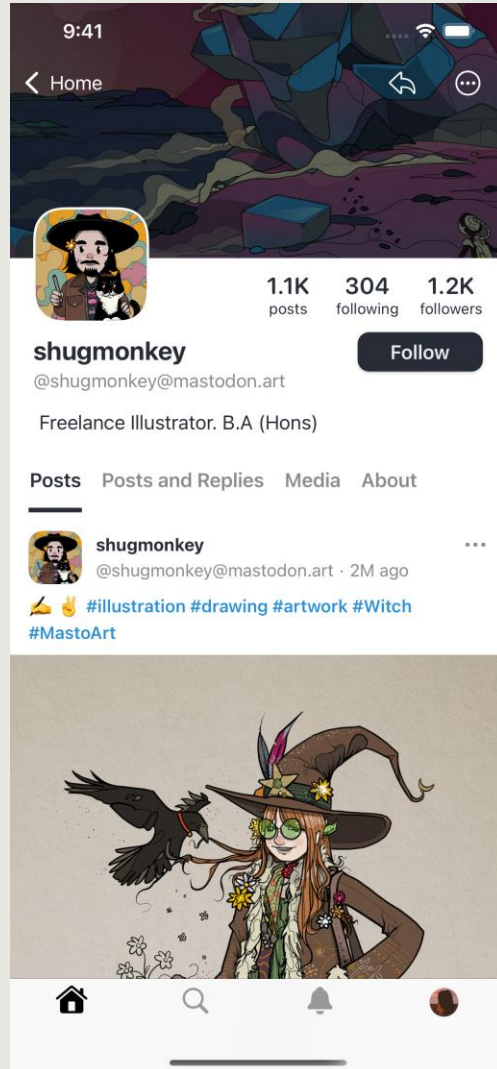


Mastodon?



A 8-slide what-and-how-to-don for Digital Geography Lab

Whatstodon?



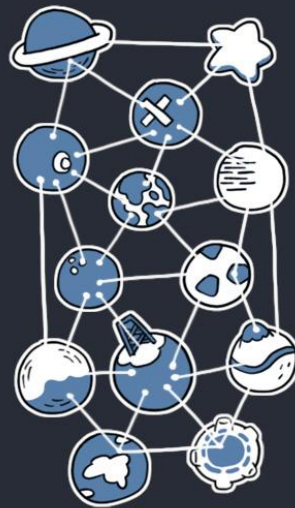
- A microblogging service like Twitter
- Users can write posts, share images and videos, and create polls etc.
- Users can follow other users.
- Open-source, owned by a German non-profit
- There is no content algorithm
- Timelines are chronological
- No ads or tracking
- Federated, not centralized



Centralized



Federated



Distributed

Fede-what?

- **Federation** is a form of decentralization.
- Instead of a single central service everybody uses, there are many services, that any number of people can use.
- This means there are many servers (instances) owned by various organizations, companies, and private individuals which can interact

Email is also a federated service

- Users choose **an instance** (a server) where to register
- Instance choice does not isolate you from other instances
- Users can follow users from any instance
- Users can easily change instances

All follows/followers will transfer

Posts will remain with the old account

@waeiski@vis.social

Username

Server/instance name

Username-adon

- Usernames have a certain logic to them specific to Mastodon
- The first part is your **username**
- The second part indicates your **instance**
- If you see a user with the instance missing in their name, this user is on the same instance with you

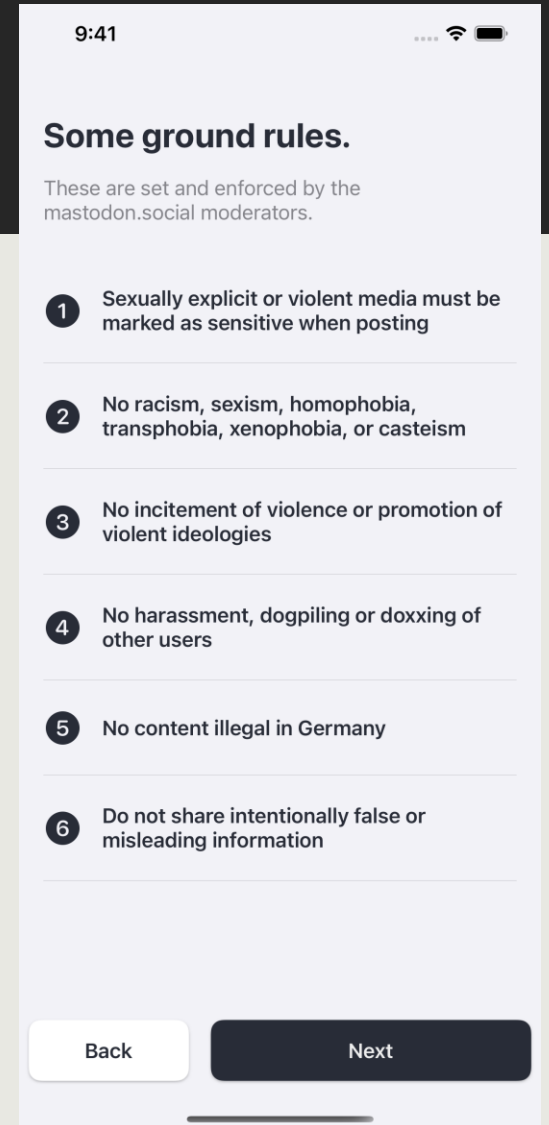


How-to-use-todon

- Browser
Elk.zone is an interesting browser app (Twitter-like)
- Mobile apps on both Android and iOS
- Väiski's mobile app recommendations:
Android: *Megalodon, Tusky*
iOS: *Ice Cubes, Ivory, Metatext*
- The official Mastodon app is a bit limited for now.
Megalodon is based on this, but adds missing features

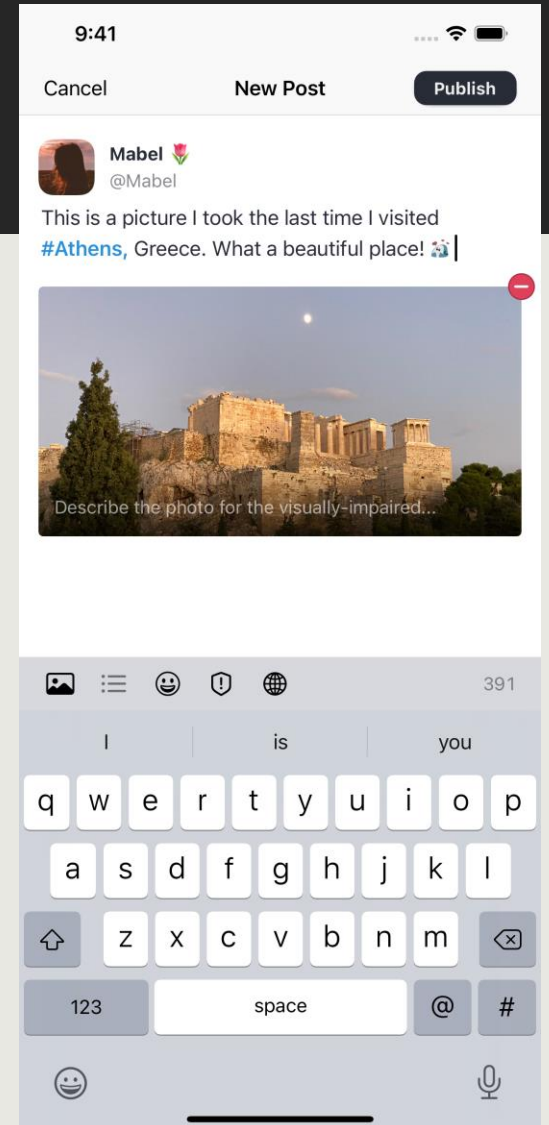
How-to-use-todon

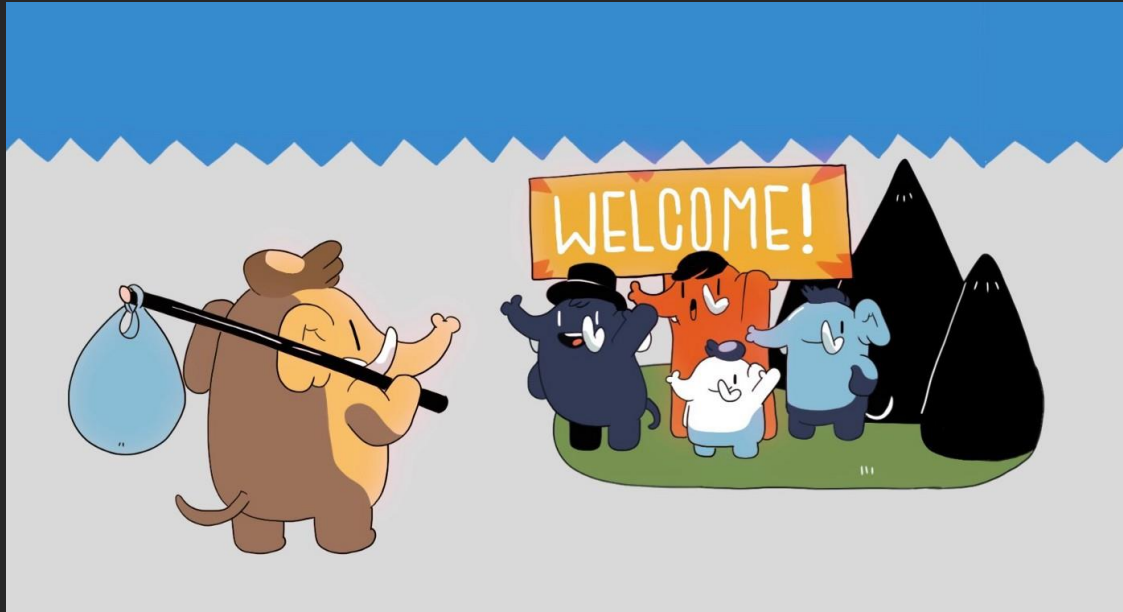
- Select an instance, there are many from generalist to very specific.
- Instance selection only affects your **local timeline**.
- There are **3 timelines** in Mastodon: Home , Local, and Federated
 - Home timeline** contains posts from people you follow
 - Local timeline** contains posts from everyone on the same instance
 - Federated contains** all posts from everyone on all instances
- Home and Local are the most important. Federated is like an unfocused firehose



How-to-use-todon

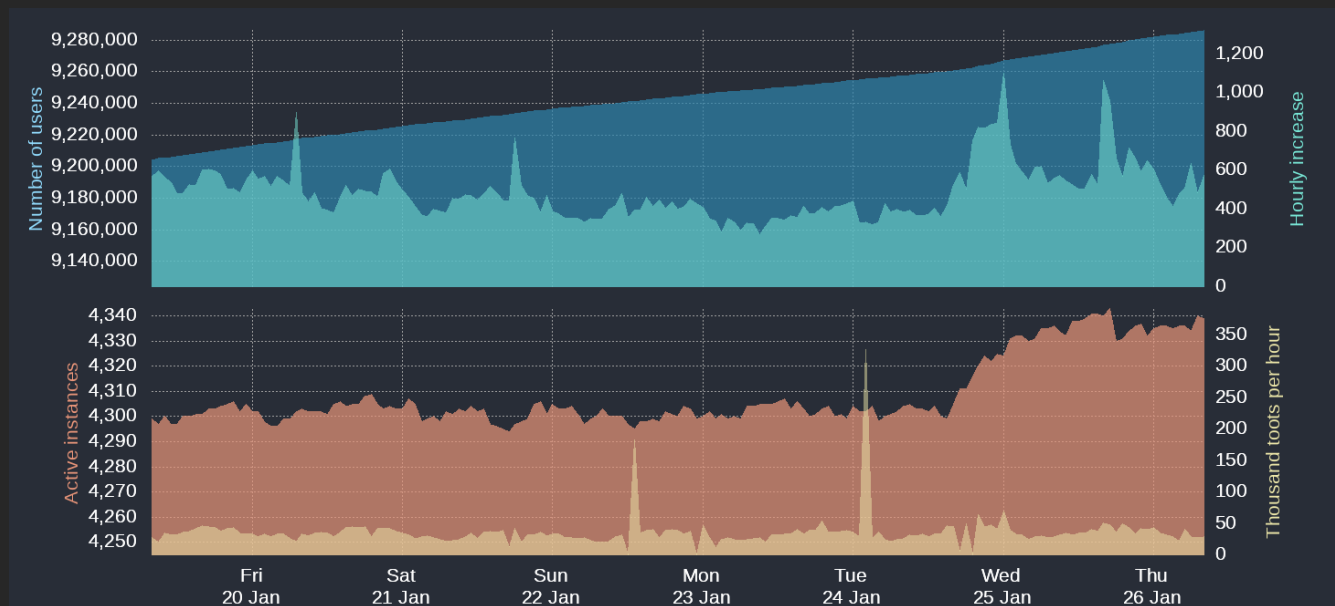
- To populate your Follows timeline, follow other Mastodon users. Follow many users!
Good strategy: find somebody you like and follow their follows. Rinse and repeat.
Another strategy: There is a "For you" tab with suggestions of people to follow.
- Liking a post does not increase a posts visibility, only informs the poster you liked it
- Boosting (retweeting) a post increases a posts visibility to your followers
- Use Content Warnings when posting about things that might be triggering for some
- Check your instance guidelines for desired behavior
e.g. Cross-posting from Twitter, content warnings, languages...
- Most instances are run out-of-pocket by volunteers on their free time, be nice to the admins/moderators.





Potentially interesting instances

- **Geography:** mapstodon.space, urbanists.social
- **Ecology/biology:** ecoevo.social
- **Science/academia:** scholar.social, fediscience.org, mstdn.science
- **Visualization:** vis.social, scicomm.xyz
- **Generalist:** mastodon.social, mastodon.green, mas.to
- Helsinki university instance?



@mastodonusercount@bitcoinhackers.org